

# Mi-Witness HD Camera, Saving the Settings.

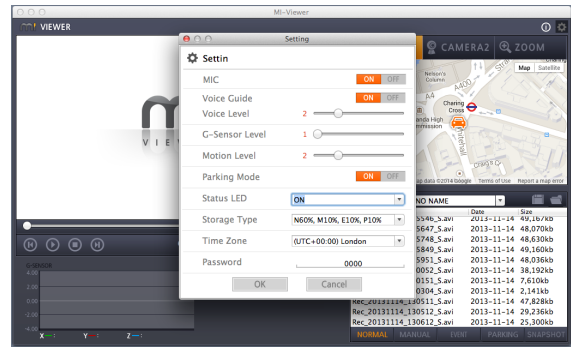
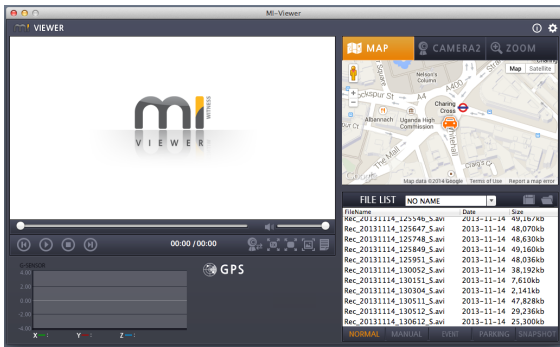
Saving the settings on the Mi-Witness HD Camera is a simple process and if you follow these steps you will be up and running in no time.

**IMPORTANT.** If your SD card has not been used in the Mi-Witness HD Camera the first thing you must do is let the Mi-Witness HD Camera set the SD card up for you. If you haven't done so start by giving the SD card a format. Using software called 'SD Formatter', free off the internet @ <https://www.sdcard.org> Use the quick format. See our Help Sheet 'Mi-Witness HD Camera and SD Card Maintenance' for more information.

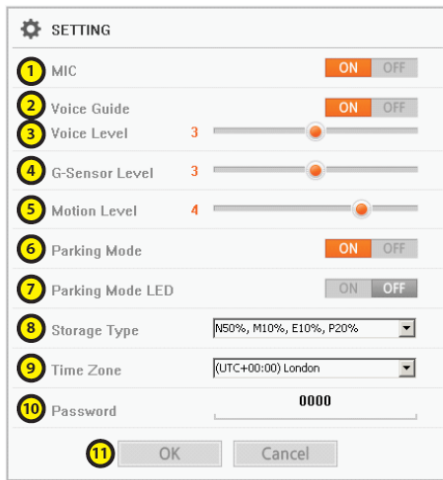
If the SD Card has been used in the Mi-Witness HD Camera then skip to **STEP 3** otherwise follow these steps.

**STEP 1.** Place the SD card in the camera and power up the camera. Once the camera has said 'Start Normal Recording' then you can power down the Mi-Witness HD Camera.

**STEP 2.** Insert the SD card in your computer.



**STEP 3.** Open up the Mi-Witness Viewer Software and then the Mi-Witness Viewer Software Settings menu (Cog at the top right corner). Change



- 1 MIC - Microphone On/Off
- 2 Voice guide - Voice guide On/Off
- 3 Voice Level - Volume - set volume for voice messages (1 - 5)
- 4 G-sensor level - select acceleration sensor selectivity (1 - 5)
- 5 Motion level - select motion sensor selectivity (1 - 5)
- 6 Parking Mode - Parking Recording mode On/Off
- 7 Parking Mode LED - LED On / Off during Parking
- 8 Storage type - Memory space selection according to your preferred memory usage  
NORMAL : N , MANUAL : M , EVENT : E , PARKING : P  
( ex .N40% , M5% , E5% , P40%)
- 9 Time zone - select your country time zone  
(\* mark means that Daylight Saving Time)
- 10 Password - this is a four digit number for your own WiFi use.  
Change p/w here and access through Smart phone.
- 11 OK/Cancel - press "OK" button after changing settings.

your settings to the ones you want and then click the 'OK' button and then close the Mi-Witness Viewer Software. (Don't open up the settings menu again to check as on some computers this may reset the settings to the default settings and you will have to start over.)

**STEP 4.** Insert the SD card in the camera and power the camera up and your new settings will take effect.

**TIP: To save time and so as to not have to redo your settings each time you format, save a copy of the 'Config' folder that is on the SD Card to your desktop or another safe place. Then after a format you can just copy that folder onto the freshly formatted SD card. The camera will do the rest when you power it up.**

