

Mi-Witness Firmware and Software Information.

Mi-Witness Video Quality Recording Settings.

The latest updated the software and firmware for the Mi-Witness offers the ability to choose the video quality settings.

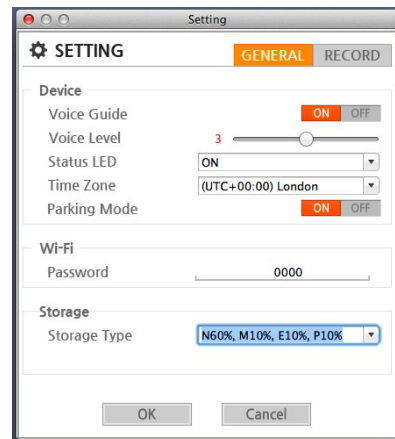
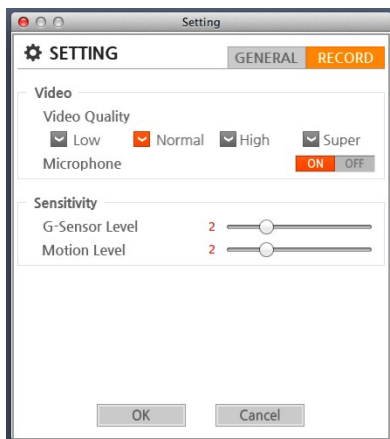
Low	4Mbps
Normal	6Mbps
High	8Mbps
Super	10Mbps

The higher the setting the shorter the recording time. See approximate recordings time in the chart to the right.

Card Size	Bit Rate Mbps	70% Recording Time Minutes	70% Recording Time Hours
8GB	4	193	3.22
8GB	6	126	2.1
8GB	8	96	1.61
8GB	10	75	1.8
32GB	4	764	12.74
32GB	6	508	8.4
32GB	8	382	6.37
32GB	10	306	5.1
Recording Times Approximate			

Software and Firmware Recommended Settings.

Recommended settings for a normal vehicle. (Family car) If you have sports suspension you may need to reduce the G-Sensor level to 1. Motion level is for the Parking mode setting 2 is usually ideal.



Firmware and Software Install Procedure

Please follow this guide for installing new firmware and software.

Stage 1. MicroSD and Camera Firmware Preparation.

- Download and install SD Formatter <https://www.sdcard.org/downloads/>
- (Back up the microSD Card to your PC if you want to save the files on the card)
- Format the microSD Card using SD Formatter. (See our separate help sheet if you need information on formatting - *Mi-Witness HD Camera and SD Card Maintenance*)
- Download the Mi Witness firmware update zip file from the registered area of Mi-Witness.
- Unzip to a location of your choosing.
- Copy over each file from the firmware folder to the SD card. (Do not place it in a folder on the microSD card)
- Place microSD Card in Mi-Witness camera and power up. The camera will then configure itself for the new firmware. Do not power off until normal recording begins.

Sage 2. Mi Witness viewer removal.

- Remove the old Mi Witness Viewer software first using the Windows removal tool or through your applications folder on OSx
- Download the Mi-Witness Viewer software zip file from the registered area of Mi-Witness.
- Unzip to a location of your choosing.
- Install the new software from the chosen folder

Mi Witness Registration Area

<http://www.mi-witness.co.uk/mi-registration>